



## Headset

### Fitting Cups

Firstly, ensure both ends of head tube are parallel and of correct size. If necessary ream the bore and face each end of the head tube.

Chamfer the inside edges of the head tube at both ends.

Press in both cups using a headset press fitted with Hope adaptors. Use the hope logo to ensure the cups are fitted in the correct end of the head tube.

### Fitting base plate

Slide the base plate onto the steerer tube with the flat side to the bottom.

Using a suitable tube over the steerer set the base plate into position.

### Cutting Steerer

Fit forks into frame. Slide complete top assembly and stem over steerer.

Scribe a line flush with the top of the stem.

Remove stem and cut stem 3mm below the line.

Remove all sharp edges.

With 8mm allen key, adjust Head Doctor until a slide fit inside stem and insert it 10mm into steerer. Tighten until solid in steerer.

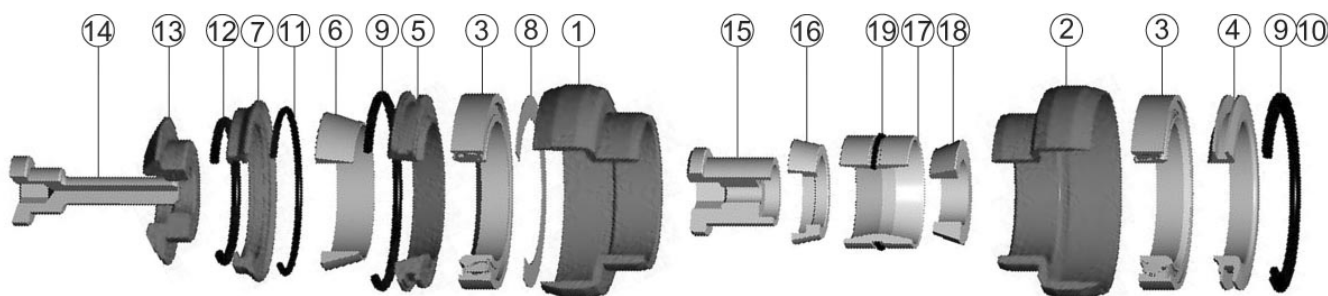
### Final Assembly

Liberally apply a good quality waterproof grease to all bearing and sealing surfaces. When fitting ensure all "o" rings are located correctly.

Insert forks into frame.

Fit top bearing cap, taper ring and sealing cover over steerer.

Fit stem and top cap. Tighten bolt in top cap until forks rotate smoothly without play or restriction.



ITEM	PART NO.	DESCRIPTION	QTY.	ITEM	PART NO.	DESCRIPTION	QTY.	ITEM	PART NO.	DESCRIPTION	QTY.
1	HS101	Top Cup	1	8	HS108	Nylon Shim	2	14	HS114	Head Bolt	1
2	HS102	Bottom Cup	1	9	HS109	39mm O Ring	2	15	HS115	Centre Screw	1
3	HS103	Bearing	2	10	HS110	35mm O Ring	1	16	HS116	Plain Taper	1
4	HS104	Crown Race	1	11	HS111	34mm O Ring	1	17	HS117	Outer Sleeve	1
5	HS105	Top Bearing cover	1	12	HS112	28mm O Ring	1	18	HS118	Threaded Taper	1
6	HS106	Taper Ring	1	13	HS113	Top Cap	1	19	HS119	22mm O ring	1
7	HS107	Taper Ring Cover	1								