



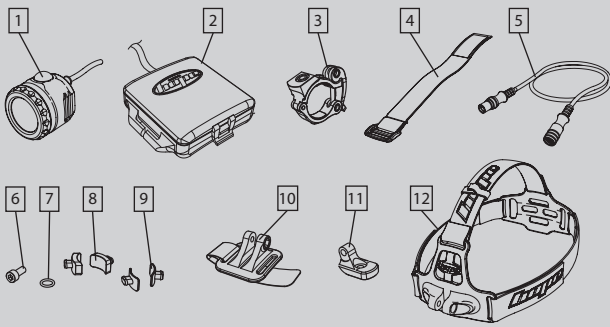
INSTRUCTION MANUAL

INTRODUCTION

The new VISION 1 LED uses a single Cree high power LED providing up to 215 (measured) lumens of light output on max power. The versatility of being able to accept any AA (LR6) size battery cell gives you the option of achieving extended burn times in an extremely small package. With a regulated drive circuit you will always get the same level of light output regardless of what battery cell you use.

The multiple mounting options allow you to mount the light wherever you choose to use it, whether it be as a main bar mounted light, a helmet light or simply as a hand held flashlight.

CONTENTS



- | | |
|-----------------------------------|----------------------------------|
| 1. 1 LED ADVENTURE lamp unit | 7. Handlebar clamp O-ring |
| 2. 4 x AA battery case | 8. 25.4mm handlebar sleeves (x2) |
| 3. Universal handlebar clamp | 9. 31.8mm handlebar sleeves (x2) |
| 4. Elasticated battery case strap | 10. Helmet mount |
| 5. 1.0m extension cable | 11. Mount adapter |
| 6. M5 x 10mm bolt | 12. Head harness |

- Light Source:** 1 x Cree LED
- Light Output:** 215 measured lumens
300 generated lumens
- Beam:** Diffused uniform beam
(+/- 12°)
- Distance:** 80m
- Mounting:** Head Harness, handlebar or helmet mount
- Battery:** 4 x AA cells
- Charge Time:** Variable, dependant on cells
- Weight:** 215g (complete without batteries)
- Power Levels:** 4, including flash
- Burn Time:** Variable, dependant on cells

WARRANTY

All Hope Technology lighting systems are covered for one year from original date of purchase against manufacturer defects in material and workmanship. Proof of purchase is required. Product must be returned to Hope Technology to process any warranty claim. This warranty does not cover any damage caused through mis-use or failing to comply by the recommendations given in this manual. This warranty does not affect your statutory rights.

IMPORTANT INFORMATION

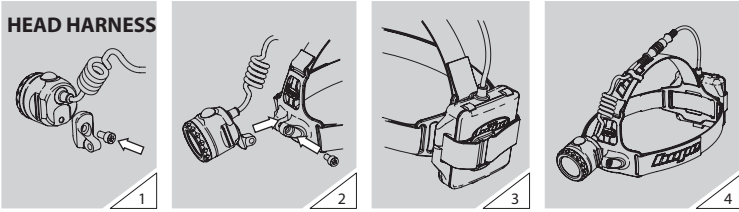
We strongly advise you read the following recommendations in order to prevent injury or damage to the lighting system.



- **This lighting system will withstand harsh wet weather conditions. However, it is not designed to be submersed in water. Please ensure that the light unit and battery pack are removed from the bike before washing - particularly if using a high pressure jet wash.**
- **Do not look directly at the beam, permanent eye damage could result. Consider other people when mounting the light on the head to avoid dazzling them.**
- **Keep this light away from children.**
- **This light unit can get hot when in use in maximum power mode. This is normal and should not be mistaken as a malfunction. Please use with caution.**
- **Unlike unregulated LED lighting systems, this light unit will shut down suddenly after a period of time in low battery mode without any dimming of the light. Please bear this in mind when using at night.**
- **Only use high quality disposable or rechargeable battery cells. When replacing discharged cells it is important to replace all four cells together. Do not mix old and new batteries or different battery types.**
- **Do not short-circuit the battery terminals. This causes the battery cells to overheat and could result in fire or explosion.**
- **The battery charger (where applicable) is designed for indoor use only and should not come into contact with water.**
- **The battery charger (where applicable) contains dangerous voltages and the cover should not be removed. Any attempt to open the charger will invalidate the warranty.**
- **This light unit conforms to the requirements of EC directive 2004/108/EC for electromagnetic compatibility.**

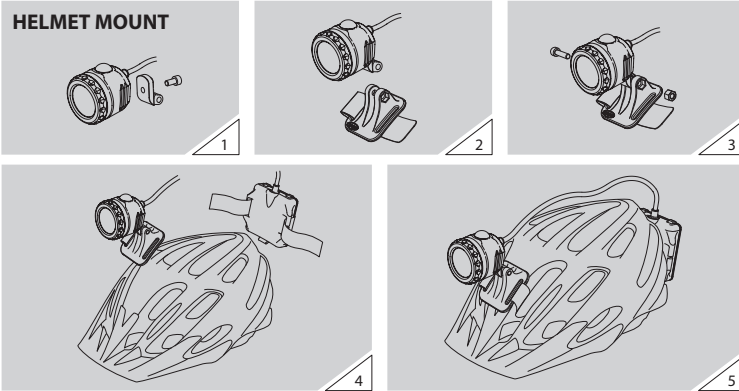
FITTING INSTRUCTIONS

HEAD HARNESS



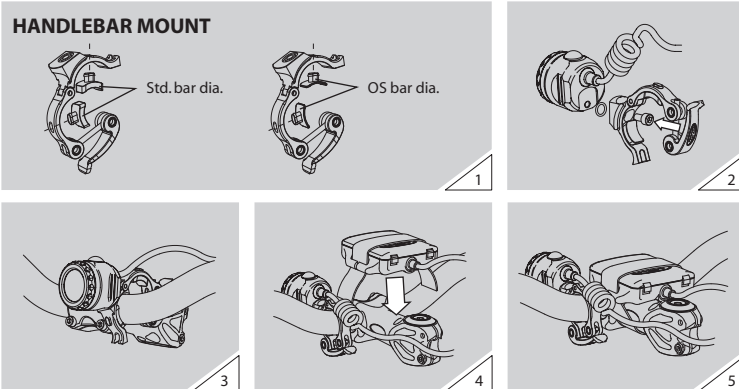
1. Attach the mount adapter to the light unit using the supplied M5 x 10mm bolt.
2. Slide the mount adapter into the head harness and align the bolt holes. Secure in place using the supplied M5 x 20mm bolt and locknut whilst ensuring there is just enough freedom to adjust the tilt angle during use (if required).
3. Fit the battery case to the rear of the harness by feeding the elasticated strap through the loops on the rear of the head harness.
4. Press the power cable into the cable clip on the top strap.

HELMET MOUNT



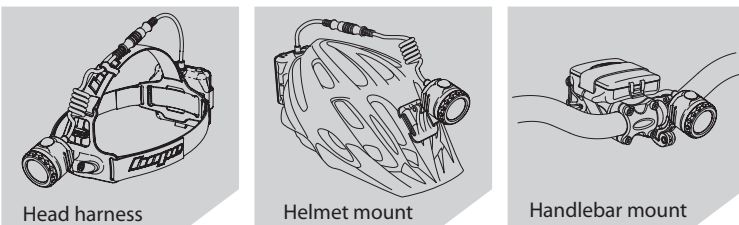
1. Attach the mount adapter to the light unit using the supplied M5 x 12mm bolt.
2. Slide the helmet mount over the mount adapter and align the bolt holes.
3. Secure in place using the supplied M5 x 20mm bolt and locknut ensuring there is just enough freedom to adjust the tilt angle while riding if required.
4. Attach the lamp unit to your helmet using the hook and loop strap.
5. Attach the battery case to the rear of the helmet using the supplied elasticated battery strap.

HANDLEBAR MOUNT



1. Select the appropriate rubber plugs for your bar size and insert into location holes in the handlebar mount.
2. Attach mount to the light unit using the supplied M5 x 10mm bolt, ensuring that the o-ring is located in the groove in the mount.
3. Attach the mount to the handlebar as close to the stem as possible and lock in place with the quick release lever.
4. Select an appropriate location to fit the battery case (eg. underneath or on top of the stem).
5. Secure in position using the supplied elasticated battery case strap.

MOUNTING OPTIONS

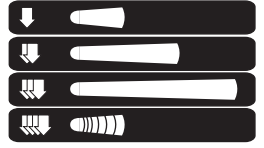


OPERATION OF THE LAMP UNIT

New for 2012-13: The 1 LED Adventure lamp now features a low battery mode which controls the lamp to drop into mode 4 (flash mode) when a low battery voltage is detected. At this point we recommend that you either replace the batteries or make plans to finish your ride. CAUTION: Unlike many other LED lighting systems available, this light will shut down when the batteries are exhausted without any dimming of the LED. Please bear this in mind when riding at night.

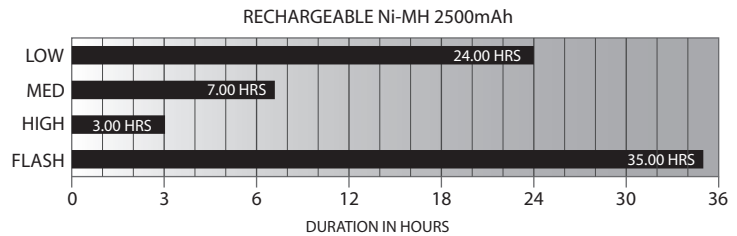
With the light off:

- Press 1 – Turn light on in low power mode
 - Press 2 – Switch light into medium power mode
 - Press 3 – Switch light into high power mode
 - Press 4 – Switch light into flash mode
- Continue to cycle through power modes upon each press of the switch.
- Press and hold for 2 seconds to turn light off.



NOTE: We recommend that you utilise the full range of power modes during use in order to get the maximum burn time out of the battery, ie. Restrict your use of the maximum power level to a minimum and switch back down to a lower power level when you can.

BURN TIMES



*Burn times stated are using the optional (recommended) Hope Ansmann 2500mAh NiMH cells and have been tested in optimum conditions and may therefore vary from those times shown

We only recommend using good quality high capacity rechargeable or disposable battery cells since this light unit is a high drain device. Using poor quality low capacity standard alkaline cells will dramatically reduce the burn time of the light unit. The chart below shows the burn time using the optional (recommended) Hope Ansmann 2500mAh Ni-MH cells and are given as a guide only. Always replace all four battery cells at the same time and do not mix battery types.

MAINTENANCE

There are no serviceable parts inside the light unit. Please do not attempt to disassemble the unit other than removing the battery holder, as this will invalidate the warranty. If you find that there is a problem with the functioning of the light unit please first check that the batteries are fully charged and in good condition. If the light still fails to function please contact Hope Technology.

WARRANTY

All Hope Technology lighting systems are covered for one year from original date of purchase against manufacturer defects in material and workmanship. Proof of purchase is required. Product must be returned to Hope Technology to process any warranty claim.

This warranty does not cover any damage caused through mis-use or failing to comply by the recommendations given in this manual.

This warranty does not affect your statutory rights.

DISPOSAL

When the equipment has reached the end of its life please dispose of the components in accordance with your local waste regulations. Lamps and batteries should be recycled where possible and not disposed of with regular waste. Disused batteries can be returned to Hope Technology for recycling.

